

2024 EDITION

# INDUSTRIAL - OTR - FORKLIFT TIRES

DISTRIBUTED BY



## Headquarters - Factory

Petlas Tire Industry and Trade  
Kındam Mahallesi Ankara-Kayseri Caddesi  
No: 2/1 Kırşehir / TÜRKİYE  
T: +90 386 252 65 50 • F: +90 386 252 65 70

## Int. Sales & Marketing

Petlas Tire Industry and Trade  
Ako Kule, Söğütözü Mh. 2178. Cd. No: 6  
06530 Ankara/TÜRKİYE  
T. +90 312 309 30 30 • F: +90 312 309 22 66

## Petlas Tire USA

1111 E. Lincolnway STE 205  
Cheyenne, WY 82001 USA

[www.starmaxx.com](http://www.starmaxx.com)

**MADE IN TÜRKİYE**

 **starmaxx**  
IND - OTR TIRES

 **starmaxx**  
IND - OTR TIRES

## RANGE OF STARMAXX IND-OTR TIRES

### INDUSTRIAL - OTR - FORKLIFT TIRES

#### RADIAL INDUSTRIAL TRACTION



Stx ND31 (R-4)



Stx ND33 (R-4)



Stx RD22 (G-2)



Stx RD22 (L2/E2)

#### LOADER GRADER RADIAL



Stx RD31 (L-3/G-3)

#### LOADER RADIAL



Stx TD41 (L-4)

#### EARTHMOVER / LOADER RADIAL



Stx RD31 (E-3/L-3)



Stx HD41 (E-4/L-4)

#### EXCAVATOR



SM-38 (E-3)

#### FORKLIFT



SM-F20 (PNEUMATIC)



SM-F30 (PNEUMATIC)



SM-F40 (PNEUMATIC)

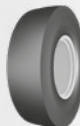


SOLIDMAX N (SOLID)

#### COMPACTOR



SM-S2 (R-3)



SM-C1 (C-1)

#### SKID STEER



SM-ND NHS



SM-135



SM-140 NHS

#### INDUSTRIAL TRACTION



TR-45 (F-3)



SM-130 (R-4)



SM-ND (R-4)



SM-125 (R-4)



TR-60 (I-3)

#### INDUSTRIAL TRACTION



SM-5 (R-1)



SM-PL (L-2)

#### GRADER



SG-200 (G-2)



SG-300 (G-2)

#### EARTHMOVER



SM-E3 (E3)



SM-60 (E-3)

#### LOADER



SM-57 (L-3)



SM-60 (L-3)



SM-70 (L-3)

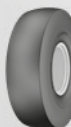


SM-70 (L-4)

#### PORT APPLICATION



C+STACKER (IND-4)



C+STACKER SMOOTH (IND-4S)

# It's hard to be in your shoes.

That is why we produce the best off road tires for you.



Strong, durable, affordable off road tires.

 **starmaxx**  
IND - OTR TIRES

# Stx ND31 (R-4)

Stx ND31 (R-4) tire has strong radial casing and steel belted construction. It is developed for construction equipment to be used in the areas of agriculture and construction. The directional tread pattern provides excellent traction, longevity, resistance to damage and high carrying capacity. Stx ND31 (R-4) is the right response to agro-industrial heavy duty needs. It is suitable for all digging and loading operations on vehicles such as telehandlers, compact loaders and backhoe loaders.



TYRE SIZE	TT/TL	LOAD INDEX	SPEED INDEX
<b>340/80 R18</b> (12.5/80 R18)	TL	143	A8/B
<b>340/80 R20</b> (12.5 R20)	TL	138	A8/B
<b>340/80 R20</b> (12.5 R20)	TL	144	A8/B
<b>480/80 R26</b> (18.4 R26)	TL	167	A8/B
<b>440/80 R28</b> (16.9 R28)	TL	156	A8/B
<b>400/70 R20</b>	TL	149	A8/B
<b>405/70 R20</b>	TL	149	A8/B
<b>460/70 R24</b> (17.5L R24)	TL	159	A8/B

UNDER DEVELOPMENT

**440/80 R24**



# Stx ND33 (R-4)

Stx ND33 (R-4) is developed and designed to offer perfect traction and long life for compact industrial vehicles such as compact loaders, backhoe loaders and telehandlers. Deep and wide lugs are carefully located on the tread to ensure perfect traction on hard or soft terrains. The wide tread profile provides a balanced feel on every condition and increases the tire's service life by avoiding irregular wear. Reinforced sidewalls offer maximum resistance against cuts and puncture while the steel belts under the tread improve the tire's durability and load capacity.



TYRE SIZE	TT/TL	LOAD INDEX	SPEED INDEX
<b>460/70 R24 (17.5L R24)</b>	TL	159	A8/B



## Stx RD22 (G-2)

Stx RD22 (G-2) is an all steel radial tire that promises resistance to tears and wears in worksites and on challenging roads. Specially formulated tread compound and all steel carcass structure of Stx RD22 (G-2) offer longevity. The non-directional pattern design delivers outstanding traction and grip in demanding conditions. Stx RD22 (G-2) is designed especially for grader applications.



TYRE SIZE	STAR RATING	TT/TL	LOAD INDEX	SPEED INDEX
14.00 R24	★	TL	153	A8



## Stx RD22 (L-2/E-2)

Stx RD22 (L-2/E-2) is an all steel radial tire that promises resistance to tears and wears in worksites and on challenging roads. Specially formulated tread compound and all steel carcass structure of Stx RD22 (L-2/E-2) offer longevity. The non-directional pattern design delivers outstanding traction and grip in demanding conditions. Stx RD22 (L-2/E-2) is designed especially for grader applications.



TYRE SIZE	STAR RATING	TT/TL	LOAD INDEX	SPEED INDEX
14.00 R24	★★★	TL	188/169	A2/B



# Stx RD31 (L-3/G-3)

Stx RD31 (L-3 / G-3) is an all steel radial OTR tire that offers ultimate resistance to all kind of damage and is designed to be used on loaders and motor graders.

Demonstrates efficient self-cleaning feature thanks to its special grooving geometry. Inter-located blocks keep their integrity on all kind of grounds. Specially designed tread compound minimizes cuts and punctures on semi rough ground conditions while simultaneously reducing heat generation to boost service life and improve wear performance.



TYRE SIZE	STAR RATING	TT/TL	LOAD INDEX	SPEED INDEX
17.5 R25	★	TL	176/153	A2/A8

# Stx TD41 (L-4)

It is a high tread depth tire designed for heel loaders. The tread pattern and carcass structure are especially designed for marble quarries and mine sites. With its specially developed tread mixture and reinforced heel structure, it provides high performance in fields where traction and grip are high.



TYRE SIZE	STAR RATING	TT/TL	LOAD INDEX	SPEED INDEX
26.5 R25	★★	TL	209	A2
29.5 R25	★★	TL	216	A2



## Stx RD31 (E-3/L-3)

Stx RD31 (E-3 / L-3) is an all steel radial OTR tire that offers ultimate resistance to all kind of damage and is designed to be used on loaders and articulated trucks.

Demonstrates efficient self-cleaning feature thanks to its special grooving geometry. Inter-located blocks keep their integrity on all kind of grounds. Specially designed tread compound minimizes cuts and punctures on semi rough ground conditions while simultaneously reducing heat generation to boost service life and improve wear performance.



TYRE SIZE	STAR RATING	TT/TL	LOAD INDEX	SPEED INDEX
17.5 R25	★★	TL	182 / 167	A2 / B
20.5 R25	★★	TL	193 / 177	A2 / B
23.5 R25	★★	TL	201 / 185	A2 / B
26.5 R25	★★	TL	209 / 193	A2 / B
29.5 R25	★★	TL	216 / 200	A2 / B



## Stx HD41 (E-4/L-4)

It is especially designed for Articulated Haulers and can also be used in wheel loaders. It is a multi-purpose tire with high tread depth. It provides a long-lasting performance by providing excellent resistance to cuts and heat with its honeycomb-shaped block pattern structure and specially developed tread mixture.



TYRE SIZE	STAR RATING	TT/TL	LOAD INDEX	SPEED INDEX
23.5 R25	★★	TL	201/185	A2/B
26.5 R25	★★	TL	209/193	A2/B
29.5 R25	★★	TL	216/200	A2/B



## SM-38 (E-3)

SM-38 is specially developed for road construction excavators. Its aggressive tread pattern delivers outstanding traction and enables excellent self-cleaning. Promises high resistance to cuts and tears and thus, ensures longevity thanks to its reinforced carcass structure.



TYRE SIZE	PR	TT/TL	LOAD INDEX		SPEED INDEX
7.50-20	10	TT	123	122	B
9.00-20	14	TT	140	137	B
10.00-20	16	TT	146	143	B



## SM-F20 (PNEUMATIC)

SM-F20 is designed for general purpose tasks. Its strong carcass structure and bead construction provide high performance and durability against impacts.



TYRE SIZE	PR	TT/TL	LOAD INDEX	SPEED INDEX
4.00-8	8	TT	94	A5
5.00-8	10	TT	111	A5
18x7-8	16	TT	125	A5
6.00-9	12	TT	121	A5
21x8-9	14	TT	131	A5
6.50-10	12	TT	125	A5
23x9-10	20	TT	142	A5
7.00-12	14	TT	134	A5
27x10-12	14	TT	143	A5
23x5-13	10	TT	121	A5
8.15-15	14	TT	146	A5
8.25-15	16	TT	149	A5





# SM-F30 (PNEUMATIC)

SM-F30 delivers high maneuverability thanks to its reinforced tread block pattern. Offers high performance on the field with its strong carcass structure and reinforced bead design. Provides excellent durability feature and resistance against cuts and wears.



TYRE SIZE	PR	TT/TL	LOAD INDEX	SPEED INDEX
4.00-8	8	TT	94	A5
5.00-8	10	TT	111	A5
16x6-8	16	TT	113	A5
18x7-8	16	TT	125	A5
21x8-9	14	TT	131	A5
6.00-9*	12	TT	121	A5
6.50-10*	12	TT	125	A5
23x9-10	20	TT	142	A5
7.00-12*	14	TT	134	A5
27x10-12	14	TT	143	A5
23x5-(13)	10	TT	121	A5
7.50-15	14	TT	144	A5
8.15-15*	14	TT	146	A5
250-15	20	TT	155	A5
300-15	20	TT	164	A5

\*Extra Durable



# SM-F40 (PNEUMATIC)

SM-F40 offers ultimate durability with its extra tread depth. Center reinforced block structure provides exceptional maneuverability especially while spot turnings. Resistant to cuts and chunking thanks to its strong carcass structure.



TYRE SIZE	PR	TT/TL	LOAD INDEX	SPEED INDEX
6.00-9*	12	TT	121	A5
6.50-10*	12	TT	125	A5
7.00-12*	14	TT	134	A5
8.15-15*	14	TT	146	A5
8.25-15*	16	TT	152	A5

\*Extra Durable



# SOLIDMAX N (SOLID)

SOLIDMAXX N is developed to offer extended service life and minimized maintenance costs for forklifts operating on even surfaces. The premium rubber compound provides excellent wear behavior and extreme resistance to cuts, chips and wear. The cushion layer ensures that toughness does not lead to compromises on operator's comfort and forklift's service life. Steel bead wires embedded in the hard base compound guarantees integrity by preventing the tire from rotating on the rim.



TYRE SIZE	RECOM.	BEAD*	LOAD INDEX	SPEED INDEX
4.00-8	3.00-D	Q/N	97	A5
5.00-8	3.25J-8	Q/N	111	A5
15x4.5-8	3.00D-8	Q/N	100	A5
16x6-8	4.33R-8	Q/N	113	A5
18x7-8	4.33R-8	Q/N	125	A5
6.00-9	4.00E-9	Q/N	121	A5
21x8-9	6.00E-9	Q/N	134	A5
23x9-10	6.50F-10	Q/N	142	A5
140/55-9	4.00-E	Q/N	104	A5
6.50-10	5.00F-10	Q/N	128	A5
23x10-12	8.00G-12	Q/N	145	A5
200/50-10	6.50F-10	Q/N	130	A5
27x10-12	8.00G-12	Q/N	146	A5
7.00-12	5.00S-12	Q/N	136	A5
8.15-15	7.0-15	Q/N	142	A5
8.25-15	6.5-15	Q/N	153	A5
250-15	7.0-15	Q/N	153	A5

Q: Quick  
N: Normal

\*For each tire size of the Solidmax N (Solid) forklift tires, there are two options: Quick Fit and Normal Fit.

# SM-S2 (R-3)

SM-S2 (R-3) is specially designed for compactors applications. Delivers high impact resistance when used in paving applications. Offers outstanding longevity thanks to its strong carcass structure.



TYRE SIZE	PR	TT/TL	LOAD INDEX	SPEED INDEX
23.1-26	12	TL	162	A8
23.1-26	14	TL	166	A8



# SM-C1 (C-1)

Suitable to use for industrial compacting roadbeds and rolling asphalt. Heat resistant smooth pattern design distribute the pressure equally towards the road. Delivers high mileage performance and comfort riding.



TYRE SIZE	PR	TT/TL	LOAD INDEX	SPEED INDEX
11.00-20	14	TT	165	A2
13.0/80 R20	-	TL	164	A3



# SM-ND NHS

Designed for general purpose use in construction applications. Delivers exceptional traction thanks to its directional pattern design and robust lugs. Strong carcass structure enhances resistance to cuts, tears and wears. Offers outstanding cost efficiency.



TYRE SIZE	PR	TT/TL	LOAD INDEX	SPEED INDEX
10-16,5 NHS	8	TL	131	A3
12-16,5 NHS	10	TL	142	A3



# SM-135

Skid steer tire solution for harsh, off-road applications. Delivers enhanced durability, traction and side impact resistance for excellent value, performance and low operating costs.



TYRE SIZE	PR	TT/TL	LOAD INDEX	SPEED INDEX
10-16,5 NHS	12	TL	138	A3
12-16,5 NHS	14	TL	142	A3



# SM-I40 NHS

Skid steer tire solution for harsh, off-road applications. Delivers enhanced durability, traction and side impact resistance for excellent value, performance and low operating costs.



TYRE SIZE	PR	TT/TL	LOAD INDEX	SPEED INDEX
10-16,5 NHS	12	TL	138	A3
12-16,5 NHS	14	TL	147	A3



# TR-45 (F-3)

It is developed for front axles of 2WD industrial tractors and compact earthmovers for the purpose of usage in agricultural areas and worksites. Moreover, it is multi-purpose, low-profile tire that can be used on trailers for on or off road. It provides resistance and longevity against to tears and wears on hard soil, asphalt, and concrete with its specially formulated tread compound and reinforced carcass structure.



TYRE SIZE	TT/TL	LOAD INDEX	SPEED INDEX
11L-16 SL	TL	116	A8

# SM-I30 (R-4)

SM-I30 is an R-4 pattern designed to provide ultimate traction and durability for compact loaders, backhoe loaders and telehandlers. Wide and deep lugs are purposefully located to maximize traction on challenging terrains and ensure maximum durability against cuts and damages. Guarantees consistent performance throughout the tire's long lifespan with wide tread profile that improves the tire's resistance against irregular wear. The number and angles of undertread plies are specifically determined to improve lateral stability.



TYRE SIZE	PR	TT/TL	LOAD INDEX	SPEED INDEX
16.0/70-20	16	TL	156	A8



## SM-ND (R-4)

Designed for general purpose use in construction applications. Delivers exceptional traction thanks to its directional pattern design and robust lugs. Strong carcass structure enhances resistance to cuts, tears and wears. Offers outstanding cost efficiency.



TYRE SIZE	PR	TT/TL	LOAD INDEX	SPEED INDEX
10.0/75-15.3	12	TL	126	A8
11.5/80-15.3	12	TL	135	A8
10.5/80-18	12	TL	134	A8
280/80-18	12	TL	134	A8
16.0/70-20	14	TT	154	A8
405/70-20	14	TT	154	A8
16.0/70-24	14	TL	152	B
405/70-24	14	TL	152	B
480/80-26	12	TL	156	A8
23.1-26	14	TL	166	A8



## SM-I25 (R-4)

Specially designed for backhoe and telehandler applications. Offers ultimate resistance to cuts, tears, chips and chunks with its exceptional tread compound and wide lugs. Strong carcass structure ensures longevity.

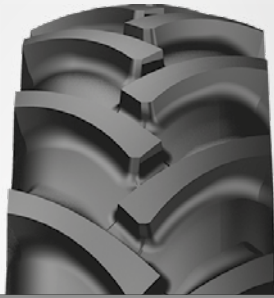


TYRE SIZE	PR	TT/TL	LOAD INDEX	SPEED INDEX	TYRE SIZE	PR	TT/TL	LOAD INDEX	SPEED INDEX
16.5/85-24	12	TL	149	A8	14.5-20	14	TT	143	D
16.5/85-24	16	TL	156	A8	14.5-20	14	TL	143	D
12.5/80-18	14	TL	146	A8	16.9-24	12	TL	149	A8
340/80-18	12	TL	142	A8	16.9-24	14	TL	152	A8
440/80-24	12	TL	149	A8	19.5L-24	12	TL	151	A8
480/80-26	14	TL	158	A8	18.4-26	12	TL	156	A8
440/80-28	12	TL	152	A8	18.4-26	14	TL	158	A8
16.0/70-20	14	TL	154	A8	18.4-26	16	TL	160	A8
16.0/70-20	14	TL	156	A8	16.9-28	12	TT	152	A8
405/70-20	16	TL	154	A8	16.9-28	12	TL	152	A8
405/70-24	14	TL	152	B	16.9-28	14	TL	156	A8
16.0/70-24	14	TL	152	B					



# TR-60 (I-3)

TR-60 (I-3) tire designed for heavy duty tractor applications. Reinforced carcass structure provides exceptional durability and ensures longevity. Features excellent self-cleaning properties and outstanding grip in challenging off the road conditions. The tread pattern provides excellent stability during operations.



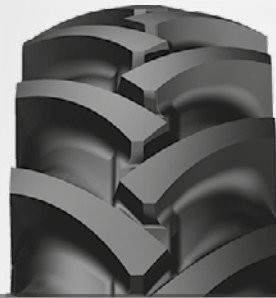
TYRE SIZE	PR	TT/TL	LOAD INDEX	SPEED INDEX	
15.5/80-24 RF	12	TL	157	145	A8
15.5/80-24 RF	16	TL	163	151	A8

RF: REINFORCED



# SM-5 (R-1)

Suitable for small loader, backhoe and telehandler applications. The special tread design offers exceptional traction. Offers outstanding durability thanks to its special compound.



TYRE SIZE	PR	TT/TL	LOAD INDEX	SPEED INDEX	
18.4-26	14	TL	145	A8	
16.9-30	14	TL	153	A8	



# SM-PL (L-2)

The ideal tire for compact machinery applications. Deep tread depth and directional tread pattern enhance traction in challenging off the road conditions. Offers excellent self-cleaning feature with its special lug design.



TYRE SIZE	PR	TT/TL	LOAD INDEX	SPEED INDEX
15.5-25	12	TL	149	B

# SG-200 (G-2)

Specially designed for grader and construction machinery applications. Offers excellent durability thanks to its solid tread center structure. Strong nylon carcass structure promises resistance against cuts, chunks and tears. Delivers outstanding traction in challenging conditions with its open shoulders.



TYRE SIZE	PR	TT/TL	LOAD INDEX	SPEED INDEX
13.00-24	12	TT	143	A8
13.00-24	12	TL	143	A8
13.00-24	16	TL	151	A8
13.00-24	16	TL	151	A8
14.00-24	16	TT	153	A8
14.00-24	16	TL	153	A8





## SG-300 (G-2)

Designed for grader and construction machinery applications. Special tread compound increases service life and improves cut resistance. Delivers enhanced durability, traction and side impact resistance and reduces operating costs. Strengthened bead and body structure makes it suitable for being retreaded.

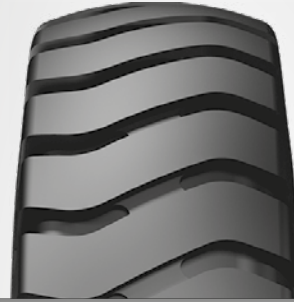


TYRE SIZE	PR	TT/TL	LOAD INDEX	SPEED INDEX
16.00-24	16	TL	160	A8



## SM-E3

Offers reliable performance in challenging off road conditions. Ensures resistance against chips and chunks thanks to its durable nylon carcass construction. Massive cross lugs and provides excellent traction with wide ground contact.



TYRE SIZE	PR	TT/TL	LOAD INDEX	SPEED INDEX
14.00-24	16	TT	153	D
14.00-24	20	TL	157	D
14.00-24	24	TT	160	D
14.00-24	28	TT	168	D
14.00-24	28	TL	168	D
14.00-24	32	TT	170	D
14.00-24	32	TL	170	D



## SM-60 (E-3)

Delivers outstanding grip in construction sites thanks to its non-directional tread pattern design. The tread compound improves cut and chip resistance. Offers ultimate durability thanks to solid tread center structure and strong nylon carcass.

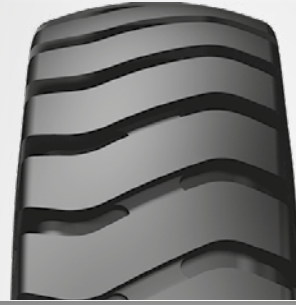


TYRE SIZE	PR	TT/TL	LOAD INDEX	SPEED INDEX
16.00-25	32	TL	177	B
18.00-25	32	TL	183	B
18.00-25	40	TL	187	B
18.00-33	32	TL	188	B



## SM-57 (L-3)

Offers reliable performance in challenging off road conditions. Its durable nylon carcass construction ensures resistance against chips and chunks. Massive cross lugs and wide ground contact provides excellent traction.



TYRE SIZE	PR	TT/TL	LOAD INDEX	SPEED INDEX
17.5-25	12	TL	171	A2
17.5-25	16	TT	177	A2
17.5-25	16	TL	177	A2
17.5-25	20	TL	181	A2



# SM-60 (L-3)

Delivers outstanding grip in construction sites thanks to its non-directional tread pattern design. The tread compound ensures excellent cut and chip resistance. Provides outstanding durability thanks to its solid tread center structure and strong nylon carcass.



TYRE SIZE	PR	TT/TL	LOAD INDEX	SPEED INDEX
17.5-25	16	TL	177	A2
20.5-25	20	TL	186	A2
23.5-25	20	TL	191	A2
23.5-25	24	TL	196	A2
26.5-25 CR	28	TL	203	A2
26.5-25 CR	32	TL	206	A2
29.5-25 CR	28	TL	207	A2
29.5-25 CR	32	TL	210	A2

CR: Cut Resistance

UNDER DEVELOPMENT  
29.5-25 34PR



# SM-70 (L-3)

Delivers optimized performance on all terrains. The special compound and aggressive design of the tread pattern enhances handling throughout its exceptionally long life. Provides outstanding resistance to cuts and wears. Specifically designed to offer ultimate performance when excellent traction is needed.



TYRE SIZE	PR	TT/TL	LOAD INDEX	SPEED INDEX
15.5-25	12	TL	168	A2
17.5-25	16	TL	177	A2
17.5-25	20	TL	181	A2
20.5-25	20	TL	186	A2
23.5-25	20	TL	191	A2
23.5-25	24	TL	196	A2
26.5-25 CR	28	TL	203	A2
26.5-25 CR	32	TL	206	A2
29.5-25 CR	28	TL	207	A2
29.5-25 CR	32	TL	210	A2

CR: Cut Resistance



# SM-70 (L-4)

Delivers outstanding grip in construction sites thanks to its non directional tread pattern design. The tread compound ensures excellent cut and chip resistance. Provides outstanding durability thanks to its solid tread center structure and strong nylon carcass.



TYRE SIZE	PR	TT/TL	LOAD INDEX	SPEED INDEX
<b>26.5-25 CR</b>	32	TL	206	A2
<b>29.5-25 CR</b>	28	TL	207	A2

CR: Cut Resistance



# C+STACKER (IND-4)

Specially designed for port applications. Deep and non-directional tread design delivers excellent traction and ensures long operating hours. Offers excellent durability features and high resistance against cuts, chunks and wears. Wide centerline enables riding comfort.



TYRE SIZE	PR	TT/TL	LOAD INDEX	SPEED INDEX
<b>18.00-25 free axle</b>	40	TL	207	A5
<b>18.00-25 drive axle</b>	40	TL	207	A5

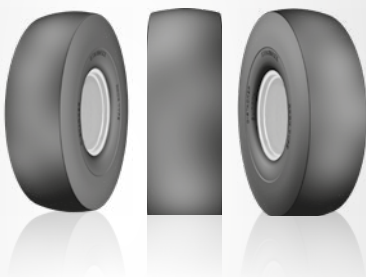


# C+STACKER SMOOTH (IND-4S)

Smooth treaded tire for port applications. Optimized tread compound offers outstanding resistance to wear and ensures exceptional longevity. Promises high stability thanks to its smooth tread design. Highly resistant to abrasion.



IMPROVED



TYRE SIZE	PR	TT/TL	LOAD INDEX	SPEED INDEX
<b>18.00-25 free axle</b>	40	TL	207	A5
<b>18.00-25 drive axle</b>	40	TL	207	A5



# RANGE OF STARMAXX INDUSTRIAL-OTR- FORKLIFT TIRES

At Starmaxx, we're dedicated to powering industrial progress with our IND-OTR tires. Engineered for the toughest environments, these tires are the epitome of strength and endurance.

Featuring robust construction and advanced tread designs, Starmaxx IND-OTR tires provide exceptional traction and wear resistance. This ensures reliable performance even under heavy loads and in challenging terrains. Their enhanced stability and longevity mean less downtime and more productivity for your operations.

## DESCRIPTION

- For load capacity and inflating pressure figures on different speed rates, please consult the producer company.
- Our company is entitled to change any information in this brochure without prior notice.
- This brochure overrides any previous documents.
- All figures are for reference and our company cannot be deemed responsible for printing errors.
- The visual content of this brochure is only representative. To find the compatible tire for your vehicle, please refer to the vehicle service or authorized tire dealer.

