



# TRUCK & BUS TIRES



 **starmaxx**  
TRUCK & BUS TIRES

#### **NOTICES & DISCLAIMER**

- For load capacity and inflating pressure figures on different speed rates, please consult the producer company.
- Our company is entitled to change any information in this brochure without prior notice. This brochure overrides any previous documents.
- All figures are for reference and our company cannot be deemed responsible for printing errors.
- The visual content of this brochure is only representative. To find the compatible tire for your vehicle, please refer to the vehicle service or authorized tire dealer.



# CONTENTS

Page 2 Range of Starmaxx TBR Tires

Page 4 Starmaxx Tires by Size

Long Haul  
Regional  
Trailer  
Mixed Service (On-Off)  
Trailer (On-Off)  
Off Road  
Urban

Page 6 General Information

Sidewall Markings  
Speed Symbol Table  
Load Index Table

## Long Haul

GH 100	GH 105	GH 110	DH 100
10	11	12	13

## Regional

GZ 300	DZ 300
14	15

## Trailer

LH 100	GH 100	LZ 300	LZ 305	GH 110
16	17	18	19	20

## Mixed Service (On - Off)

GC 700	GC 710	DC 700 Plus	GY 800
21	22	23	24

## Trailer (On - Off)

LCW 710
25

## Off Road

DM 905
26

## Urban

GU 500	G UW 550	DUW 550	DU 500
28	29	30	31

**Long Haul**



**GH 100**



**GH 105**



**GH 110**



**DH 100**

**Regional**



**GZ 300**



**DZ 300**

**Trailer**



**LH 100**



**GH 100**



**LZ 300**



**LZ 305**



**GH 110**

## Mixed Service (On - Off)



**GC 700**



**GC 710**



**DC 700 PLUS**



**GY 800**

## Trailer (On - Off)



**LCW 710**

## Off Road



**DM 905**

## Urban



**GU 500**



**GUW 550**



**DUW 550**



**DU 500**



**GH 100 LONG HAUL**

245/70 R19.5 136/134M  
 265/70 R19.5 140/138M  
 285/70 R19.5 146/144L (145/143M)  
 295/80 R22.5 152/148M  
 315/80 R22.5 154/150M (156/150L)



**DZ 300 REGIONAL**

8.5 R17.5 121/120L  
 215/75 R17.5 126/124M  
 225/75 R17.5 129/127M  
 235/75 R17.5 132/130M  
 245/70 R19.5 136/134M



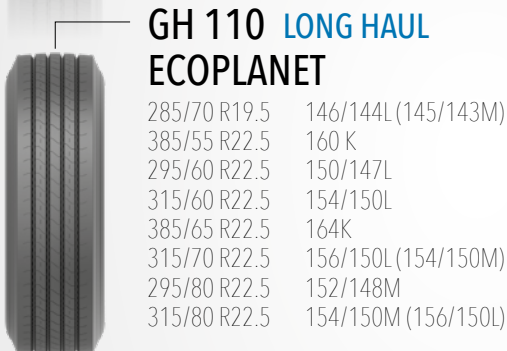
**GH 105 LONG HAUL**

11 R22.5 148/145M  
 12 R22.5 152/148M



**LH 100 TRAILER  
 PROGREEN**

215/75 R17.5 135/133J  
 235/75 R17.5 143/141J (144/144F)  
 245/70 R17.5 143/141J (146/146F)  
 245/70 R19.5 141/140J  
 265/70 R19.5 143/141J  
 285/70 R19.5 150/148J



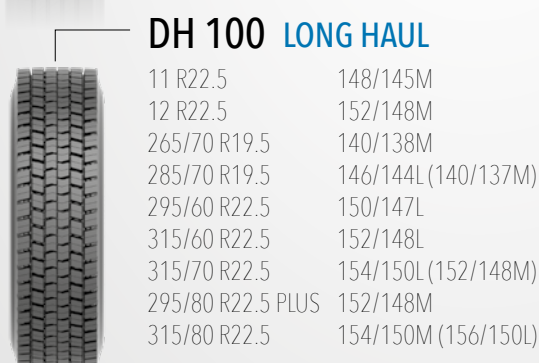
**GH 110 LONG HAUL  
 ECOPLANET**

285/70 R19.5 146/144L (145/143M)  
 385/55 R22.5 160 K  
 295/60 R22.5 150/147L  
 315/60 R22.5 154/150L  
 385/65 R22.5 164K  
 315/70 R22.5 156/150L (154/150M)  
 295/80 R22.5 152/148M  
 315/80 R22.5 154/150M (156/150L)



**GH 100 TRAILER**

245/70 R19.5 FRT 141/140J  
 265/70 R19.5 FRT 143/141J  
 285/70 R19.5 FRT 150/148J



**DH 100 LONG HAUL**

11 R22.5 148/145M  
 12 R22.5 152/148M  
 265/70 R19.5 140/138M  
 285/70 R19.5 146/144L (140/137M)  
 295/60 R22.5 150/147L  
 315/60 R22.5 152/148L  
 315/70 R22.5 154/150L (152/148M)  
 295/80 R22.5 PLUS 152/148M  
 315/80 R22.5 154/150M (156/150L)



**LZ 300 TRAILER**

435/50 R19.5 160J  
 385/55 R22.5 160K (158L)  
 385/65 R22.5 160K (158L)  
 385/65 R22.5 164K (158L)



**GZ 300 REGIONAL**

8.5 R17.5 121/120L  
 215/75 R17.5 126/124M  
 225/75 R17.5 129/127M  
 235/75 R17.5 132/130M



**LZ 305 TRAILER**

215/75 R17.5 135/133J  
 235/75 R17.5 143/141J (144/144F)  
 385/65 R22.5 160K (158L)  
 385/65 R22.5 164K





### GH 110 TRAILER

285/70 R19.5 FRT 150/148J



### GC 700 MIXED SERVICE (ON-OFF)

12 R22.5 152/148L  
13 R22.5 156/150K  
315/80 R22.5 156/150K (154/150L)



### GC 710 MIXED SERVICE (ON-OFF)

12.00 R24 TL 160/157K  
12.00 R24 TT 160/157K  
315/80 R22.5 156/150L



### DC 700 MIXED SERVICE (ON-OFF) PLUS

12 R22.5 152/148L  
295/80 R22.5 152/148 M  
315/80 R22.5 156/150K (154/150L)



### GY 800 MIXED SERVICE (ON-OFF)

13 R22.5 156/150K  
295/80 R22.5 152/148L  
315/80 R22.5 156/150K  
12.00 R24 TL 160/157K  
12.00 R24 TT 160/157K



### LCW 710 TRAILER (ON-OFF)

385/65 R22.5 160K (158L)



### DM 905 OFF ROAD

13 R22.5 154/150K



### GU 500 URBAN

275/70 R22.5 150/145J (152/148E)  
275/70 R22.5 150/148J



### GUW 550 URBAN

275/70 R22.5 150/145J (152/148E)



### DUW 550 URBAN

275/70 R22.5 150/145J (152/148E)



### DU 500 URBAN

275/70 R22.5 150/145J (152/148E)

There are certain markings on the sidewalls of each tire. Below, you can find remarks and notices about the sidewall markings and the properties they depict:

**DOT Symbol:**

Proves that tyre complies with DOT regulations.

**European Commission of Economics Confirmation:**

It is the legitimate proof that tires comply with all ECE directives and is represented by a common and unique confirmation number due to regulation.

**Max. Load and Pressure Markings:**

It is a necessary marking on sidewalls of tires which complies with DOT directives. It consists of necessary information about max. load and pressure of tyres.

**“European Commission of Economics” Tire Verification Symbol:**

This symbol proves that the tyre complies with all necessary standards disclaimed by European Commission of Economics.

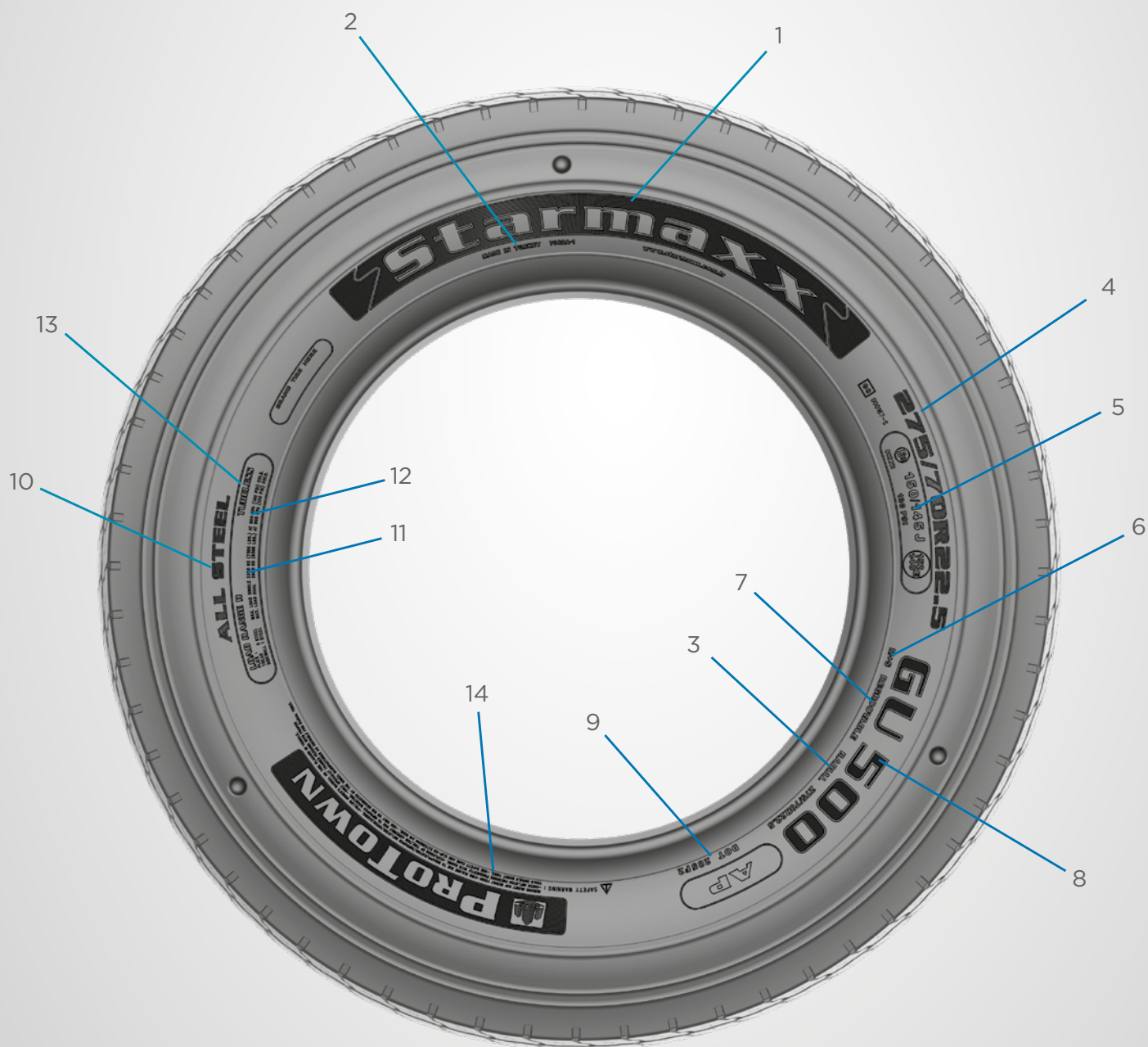
**Construction Info:**

It represents type of material used in sidewall and base in accordance with DOT regulation.

**Speed class and load index:**

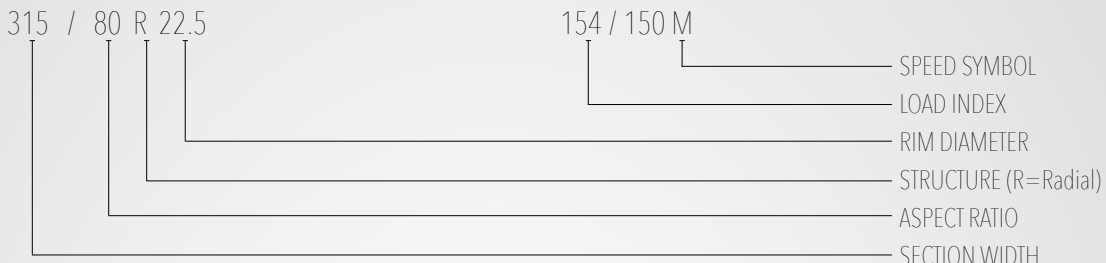
European ETRTO standards set the maximum load limits of a tire.

- |                                   |                                           |
|-----------------------------------|-------------------------------------------|
| 1. Brand Name                     | 8. Pattern Name                           |
| 2. Manufacturing Country          | 9. Date of Manufacture                    |
| 3. Construction Type: Radial/Bias | 10. All Steel                             |
| 4. Tire Size                      | 11. Maximum Load Capacity                 |
| 5. Load / Speed Index             | 12. Inflating Pressure                    |
| 6. M+S / 3PMSF Marking            | 13. Construction Type: Tubeless/Tube Type |
| 7. Retreadability Information     | 14. Safety Warnings                       |



**TIRE SIZE**

**CHARACTERISTICS OF USAGE**



**Speed Symbol Table**

It is the alphabetical code of the velocity which the tire can perform.

Speed Symbol	Speed Limit (km/h)	Speed Symbol	Speed Limit (km/h)	Speed Symbol	Speed Limit (km/h)
A1	5	D	65	Q	160
A2	10	E	70	R	170
A3	15	F	80	S	180
A4	20	G	90	T	190
A5	25	J	100	U	200
A6	30	K	110	H	210
A7	35	L	120	V	240
A8	40	M	130	W	270
B	50	N	140	Y	300
C	60	P	150	ZR	270 km+



## Load Index Table

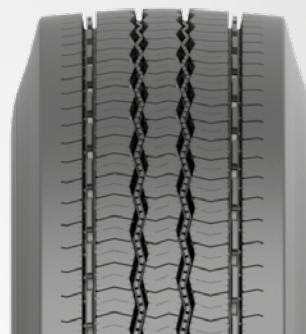
The load index is a symbol which shows the maximum load capacity of the vehicle per tire.

A	B	A	B	A	B	A	B	A	B	A	B
60	250	96	710	132	2000	168	5600	204	16000	240	45000
61	257	97	730	133	2060	169	5800	205	16500	241	46250
62	265	98	750	134	2120	170	6000	206	17000	242	47500
63	272	99	775	135	2180	171	6150	207	17500	243	48750
64	280	100	800	136	2240	172	6300	208	18000	244	50000
65	290	101	825	137	2300	173	6500	209	18500	245	51500
66	300	102	850	138	2360	174	6700	210	19000	246	53000
67	307	103	875	139	2430	175	6900	211	19500	247	54500
68	315	104	900	140	2500	176	7100	212	20000	248	56000
69	325	105	925	141	2575	177	7300	213	20600	249	58000
70	335	106	950	142	2650	178	7500	214	21200	250	60000
71	345	107	975	143	2725	179	7750	215	21800	251	61500
72	355	108	1000	144	2800	180	8000	216	22400	252	63000
73	365	109	1030	145	2900	181	8250	217	23000	253	65000
74	375	110	1060	146	3000	182	8500	218	23600	254	67000
75	387	111	1090	147	3075	183	8750	219	24300	255	69000
76	400	112	1120	148	3150	184	9000	220	25000	256	71000
77	412	113	1150	149	3250	185	9250	221	25750	257	73000
78	425	114	1180	150	3350	186	9500	222	26500	258	75000
79	437	115	1215	151	3450	187	9750	223	27250	259	77500
80	450	116	1250	152	3550	188	10000	224	28000	260	80000
81	462	117	1285	153	3650	189	10300	225	29000	261	82500
82	475	118	1320	154	3750	190	10600	226	30000	262	85000
83	487	119	1360	155	3875	191	10900	227	30750	263	87500
84	500	120	1400	156	4000	192	11200	228	31500	264	90000
85	515	121	1450	157	4125	193	11500	229	32500	265	92500
86	530	122	1500	158	4250	194	11800	230	33500	266	95000
87	545	123	1550	159	4375	195	12150	231	34500	267	97500
88	560	124	1600	160	4500	196	12500	232	35500	268	100000
89	580	125	1650	161	4625	197	12850	233	36500	269	103000
90	600	126	1700	162	4750	198	13200	234	37500	270	106000
91	615	127	1750	163	4875	199	13600	235	38750	271	109000
92	630	128	1800	164	5000	200	14000	236	40000	272	112000
93	650	129	1850	165	5150	201	14500	237	41250	273	115000
94	670	130	1900	166	5300	202	15000	238	42500	274	118000
95	690	131	1950	167	5450	203	15500	239	43750	275	121500

- (A) Load Index  
 (B) The weight a tyre can carry (kg)

# GH 100

GH 100 pattern is suitable to use on all axles on buses and at steer or non-powered second axle on trucks. Tread pattern geometry is optimized to deliver steering and grip on wet roads. Exceptional carcass structure provides an outstanding braking performance.



TIRE SIZE	LOAD / SPEED INDEX	LOAD CAPACITY		SPEED LIMIT	RIM		INFLATED DIMENSIONS		INFLATED PRESSURE		EU TIRE LABEL			
		SINGLE	DUAL		RECOM.	PERMITTED	SECTION WIDTH	OUTER DIAMETER	psi	Kpa			DB	
245/70 R19.5	136/134M	4880	8480	130	7,5	6,75	247,5	843,2	123	850	D	B	69	A
265/70 R19.5	140/138M	5000	9440	130	7,5	6,75	263,6	865,8	112	775	D	B	69	A
285/70 R19.5	146/144L (145/143M)	6000 (5800)	11200 (10900)	120 (130)	8,25	7.50, 9.00	286	897	130	900	D	B	69	A
295/80 R22.5	152/148M	7100	12600	130	9	8,25	303	1056	123	850	D	A	69	A
315/80 R22.5	154/150M (156/150L)	7500 (8000)	13400 (13400)	130 (120)	9	9,75	311	1085	120	825	D	A	69	A

## PATTERN PROPERTIES



Computer designed tire profile and block arrays offer safe and balanced driving.



Excellent carcass structure is suitable for retreading several times.



Optimised tread design provides resistance against irregular wear by balancing the pressure equally under load.



Offers excellent grip and short braking distance with numerous sipes and z-shaped circumferential blocks.

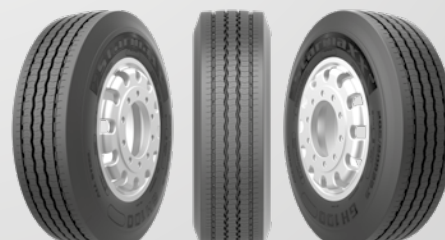
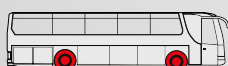
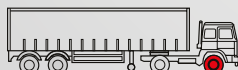
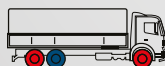


Special tread compound and robust structure ensure longevity and economic fuel consumption.



Circumferential grooves discharge water quickly and efficiently.

## POSITION / APPLICATION



• Blue optional

# GH 105

GH 105 is a steer pattern that is designed for trucks. It provides comfort and maneuverability for a balanced drive on asphalt roads. It can also be used on the non-powered second axle on trucks. Wide tread area and multi dimensional sipes improve mileage and enhance traction. Offers outstanding grip on both wet and dry roads.



TIRE SIZE	LOAD / SPEED INDEX	LOAD CAPACITY		SPEED LIMIT	RIM		INFLATED DIMENSIONS		INFLATED PRESSURE		EU TIRE LABEL			
		SINGLE	DUAL		RECOM.	PERMITTED	SECTION WIDTH	OUTER DIAMETER	psi	Kpa			DB	
11 R22.5	148/145M	6300	11600	130	8,25	7,5	278,5	1049	123	850	D	B	69	A
12 R22.5	152/148M	7100	12600	130	9,00	8,25	300	1085	123	850	D	A	69	A

## PATTERN PROPERTIES



Wide shoulder blocks provide lateral balance for a smooth drive.



Circumferential grooves drain water quickly and efficiently.



Indented sides of the blocks provide safe brake distance even if the tire is worn.



Optimized tread design provides resistance against irregular wear by balancing the pressure equally under load.



Special tread compound and robust structure ensure longevity and economic fuel consumption.

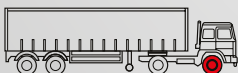
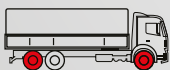


Medium density sipes provide superior handling and decrease braking distance.



Excellent carcass structure is suitable for retreading several times.

## POSITION / APPLICATION





# GH 110 ECOPLANET

GH 110 Ecoplanet is suitable to use on all axles on buses and at steer or non-powered second axle on trucks. Special tread pattern design ensures even wear throughout the tyre's lifespan. Multiple grooves allow fast water discharge and provide exceptional wet handling on asphalt roads. Wide tread area and multi dimensional sipes improve mileage and enhance traction. Offers outstanding grip on both wet and dry roads.



TIRE SIZE	LOAD / SPEED INDEX	LOAD CAPACITY		SPEED LIMIT	RIM		INFLATED DIMENSIONS		INFLATED PRESSURE		EU TIRE LABEL			
		SINGLE	DUAL		RECOM.	PERMITTED	SECTION WIDTH	OUTER DIAMETER	psi	Kpa			DB	
285/70 R19.5	146/144L (145/143M)	6000 (5800)	11200 (10900)	120 (130)	8,25	7.50, 9.00	283	894	130	900	D	B	69	A
385/55 R22.5	160 K	9000	N/A	110	11,75	12,25	381	996	130	900	C	A	72	B
295/60 R22.5	150/147L	6700	12300	120	9	9,75	287,6	921,2	130	900	C	A	69	A
315/60 R22.5	154/150L	7500	13400	120	9,75	9	314,5	949,2	131	900	C	A	69	A
385/65 R22.5	164K	10000	N/A	110	11,75	12,25	373,5	1062	131	900	C	A	69	A
315/70 R22.5	156/150L (154/150M)	8000 (7500)	13400 (13400)	120 (130)	9	9,75	315	1010	130	900	C	A	69	A
295/80 R22.5	152/148M	7100	12600	130	9	8,25	301	1055	123	850	C	A	69	A
315/80 R22.5	154/150M (156/150L)	7500 (8000)	13400 (13400)	130 (120)	9	9,75	312	1080	120	825	C	A	69	A

## PATTERN PROPERTIES



Optimized tread pattern improves resistance against irregular abrasion by distributing pressure equally under load.



Computer designed tire pattern and five circumferential ribs ensure a balanced and comfortable drive.



Numerous sipes on the ribs enable exceptional grip.



Special tread compound and robust structure enhance efficiency of fuel consumption and improves longevity.

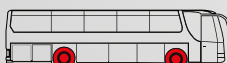
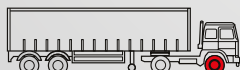
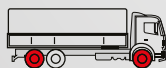


Circumferential grooves provide quick and efficient water discharge.



Exceptional carcass structure is suitable for retreading.

## POSITION / APPLICATION







# DH 100

DH 100 is a drive axle pattern designed for busses and trucks. Provides exceptional traction on asphalt roads. Block array decreases wear and increases wet grip. Optimized tread profile provides resistance against irregular wear under heavy loads. Delivers a safe drive and extended mileage in demanding weather conditions. Suitable for retreading.



TIRE SIZE	LOAD / SPEED INDEX	LOAD CAPACITY		SPEED LIMIT	RIM		INFLATED DIMENSIONS		INFLATED PRESSURE		EU TIRE LABEL			
		SINGLE	DUAL		RECOM.	PERMITTED	SECTION WIDTH	OUTER DIAMETER	psi	Kpa			DB	
11 R22.5	148/145M	6300	11600	130	8,25	7,50	278,5	1058	123	850	E	C	74	B
12 R22.5	152/148M	7100	12600	130	9,00	8,25	300	1096	123	850	D	B	74	B
265/70 R19.5	140/138M	5000	9440	130	7,5	6,75	266	866	112	775	D	C	74	B
285/70 R19.5	146/144L (140/137M)	6000 (5000)	11200 (9200)	120 (130)	8,25	7,50, 9,00	287	897,5	130	900	E	C	74	B
295/60 R22.5	150/147L	6700	12300	120	9	9,75	288,6	926,3	130	900	E	C	74	B
315/60 R22.5	152/148L	7100	12600	120	9,75	9,00	313	955	131	900	D	B	75	B
315/70 R22.5	154/150L (152/148M)	7500 (7100)	13400 (12600)	120 (130)	9	9,75	315	1021,5	130	900	E	B	75	B
295/80 R22.5 PLUS	152/148M	7100	12600	130	9	8,25	305	1060	123	850	D	B	74	B
315/80 R22.5	154/150M (156/150L)	7500 (8000)	13400 (13400)	130 (120)	9	9,75	312	1096	120	825	D	B	75	B

## PATTERN PROPERTIES



Optimized tread design provides resistance against irregular wear by distributing the pressure equally under load.



Reinforced interconnected blocks and carefully arranged block array improve driving balance.



Circumferential and lateral grooves drain water quickly and efficiently.



Block array structure provides high traction by generating numerous road adherence points on asphalt in any kind of weather conditions.



Special tread compound and robust structure ensure longevity and enhance fuel efficiency.

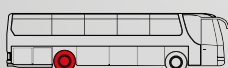
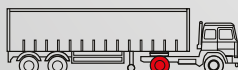
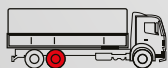


Excellent carcass structure is suitable for retreading.



Optimized tread depth increases the tire's lifespan.

## POSITION / APPLICATION



# GZ 300

GZ 300 pattern is designed for light commercial vehicles and suitable to use on all axles. Strong carcass structure provides high retreadability feature. Delivers balanced drive, perfect comfort and high maneuverability on asphalt roads. Provides exceptional wet grip. The unique pattern design enhances mileage performance.



TIRE SIZE	LOAD / SPEED INDEX	LOAD CAPACITY		SPEED LIMIT	RIM		INFLATED DIMENSIONS		INFLATED PRESSURE		EU TIRE LABEL			
		SINGLE	DUAL		RECOM.	PERMITTED	SECTION WIDTH	OUTER DIAMETER	psi	Kpa			DB	
8.5 R17.5	121/120L	2900	5600	120	6,00	5,25, 6,75	214	804,5	91	625	D	B	70	A
215/75 R17.5	126/124M	3400	6400	130	6,00	6,75	216	778	102	700	D	A	71	A
225/75 R17.5	129/127M	3700	7000	130	6,75	6	223	790	105	725	D	A	71	A
235/75 R17.5	132/130M	4000	7600	130	6,75	7,5	237	803	110	760	D	A	71	A

## PATTERN PROPERTIES



Unique pattern design and optimized block array provides excellent steering performance.



Horizontal sipes between circumferential blocks increase traction, decrease braking distance and provide outstanding grip on wet roads.



Z-shaped block structure provides excellent traction and secure braking performance.



Stone ejectors inside the grooves prevent pebble penetration inside grooves, protecting the tread and carcass.



Circumferential grooves drain water quickly and efficiently.



Provides long life and resistance to irregular wear thanks to its special belt construction, optimized footprint and rigid shoulders.



All steel construction and specifically designed low profile structure meet all highway usage criteria and offer superior comfort.

## POSITION / APPLICATION





# DZ 300

DZ 300 is drive axle (traction) pattern designed for light commercial trucks and busses. Having 3PMSF and M+S, DZ 300 provides exceptional grip and braking on snowy roads. Delivers high mileage thanks to its special compound.



TIRE SIZE	LOAD / SPEED INDEX	LOAD CAPACITY		SPEED LIMIT	RIM		INFLATED DIMENSIONS		INFLATED PRESSURE		EU TIRE LABEL			
		SINGLE	DUAL		RECOM.	PERMITTED	SECTION WIDTH	OUTER DIAMETER	psi	Kpa			DB	
8.5 R17.5	121/120L	2900	5600	120	6	5,25, 6,75	214	804,5	91	625	E	B	74	B
215/75 R17.5	126/124M	3400	6400	130	6	6,75	216	775	102	700	E	B	74	B
225/75 R17.5	129/127M	3700	7000	130	6,75	6,00	230	791	105	725	E	B	74	B
235/75 R17.5	132/130M	4000	7600	130	6,75	7,50	237	803	110	760	E	B	74	B
245/70 R19.5	136/134M	4880	8480	130	7,5	6,75	248	842,6	123	850	E	B	74	B

## PATTERN PROPERTIES



The sipes between the blocks offer enhanced traction, shortened brake distance and excellent wet grip.



Circumferential and lateral grooves ensure quick and effective water discharge.



All steel construction and specifically designed low profile structure meet all highway usage criteria.



Interconnected blocks improves longevity.



Special belt construction and optimized footprint offer long life and provide resistance against irregular wear.



Provides long life and resistance to irregular wear thanks to its special construction and rigid shoulders.



Optimized tread depth increases the tire's durability and lifespan.

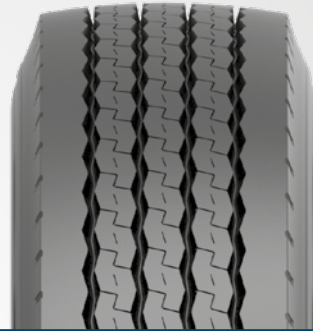
## POSITION / APPLICATION





# LH 100 ECOPLANET

LH 100 Ecoplanet is a free rolling trailer tire specifically designed for fuel efficiency. It provides exceptional wet grip performance. Its strong carcass structure ensures longevity and reduces irregular wear.



TRAILER AXLE

TIRE SIZE	LOAD / SPEED INDEX	LOAD CAPACITY		SPEED LIMIT	RIM		INFLATED DIMENSIONS		INFLATED PRESSURE		EU TIRE LABEL			
		SINGLE	DUAL		RECOM.	PERMITTED	SECTION WIDTH	OUTER DIAMETER	psi	Kpa			DB	
215/75 R17.5	135/133J	4360	8240	100	6	6,75	212	772	123	850	C	A	69	A
235/75 R17.5	143/141J (144/144F)	5450 (5600)	10300 (11200)	100 (80)	6,75	7,5	237	803	127	875	D	A	69	A
245/70 R17.5	143/141J (146/146F)	5450 (6000)	10300 (12000)	100 (80)	7,5	6,75	243	795,1	125	860	D	B	69	A
245/70 R19.5	141/140J	5150	10000	100	7,5	6,75	245,5	844,5	125	860	D	B	69	A
265/70 R19.5	143/141J	5450	10300	100	7,5	6,75	267,3	865	123	850	D	B	69	A
285/70 R19.5	150/148J	6700	12600	100	8,25	7.50, 9.00	282,5	892,5	130	900	D	B	73	B

## PATTERN PROPERTIES



Five circumferential blocks provide excellent cornering stability.



Special angled circumferential grooves minimize pebble penetration while allowing quick and efficient water drainage.



Optimized pattern design and specially developed tread compound decreases fuel consumption.

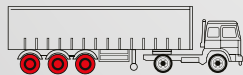


Excellent carcass structure is suitable for retreading several times.



Z-shaped block structure provides excellent handling on wet surface.

## POSITION / APPLICATION

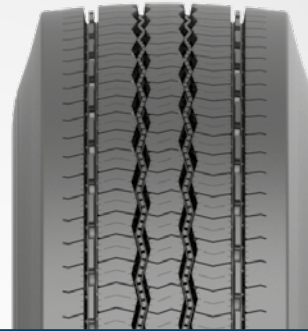






# GH 100

GH 100 is a free rolling trailer tire. Tread pattern geometry is optimized to deliver steering and grip on wet roads. Exceptional carcass structure provides outstanding braking performance.



TIRE SIZE	LOAD / SPEED INDEX	LOAD CAPACITY		SPEED LIMIT	RIM		INFLATED DIMENSIONS		INFLATED PRESSURE		EU TIRE LABEL			
		SINGLE	DUAL		RECOM.	PERMITTED	SECTION WIDTH	OUTER DIAMETER	psi	Kpa			DB	
245/70 R19.5 FRT	141/140J	5150	10000	100	7,5	6,75	247,5	843,2	125	860	D	B	69	A
265/70 R19.5 FRT	143/141J	5450	10300	100	7,5	6,75	263,6	865,8	112	775	D	B	69	A
285/70 R19.5 FRT	150/148J	6700	12600	100	8,25	7.50, 9.00	286	897	130	900	D	B	69	A

FRT: Due to the high load capacity, can be used on free rolling trailer axles.

## PATTERN PROPERTIES



Computer designed tire profile and block arrays offer safe and balanced driving.



Excellent carcass structure is suitable for retreading several times.



Optimised tread design provides resistance against irregular wear by balancing the pressure equally under load.



Offers excellent grip and short braking distance with numerous sipes and z-shaped circumferential blocks.

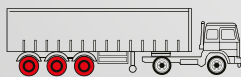


Special tread compound and robust structure ensure longevity and economic fuel consumption.



Circumferential grooves discharge water quickly and efficiently.

## POSITION / APPLICATION



# LZ 300

LZ 300 is a free rolling trailer tire. Its special pattern design enables exceptional wet grip. Optimised tread area provides resistance against irregular wear. Strong carcass structure is resistant to cuts and stone retention. Its special compound promises longevity.



TIRE SIZE	LOAD / SPEED INDEX	LOAD CAPACITY		SPEED LIMIT	RIM		INFLATED DIMENSIONS		INFLATED PRESSURE		EU TIRE LABEL			
		SINGLE	DUAL		RECOM.	PERMITTED	SECTION WIDTH	OUTER DIAMETER	psi	Kpa			DB	
435/50 R19.5	160J	9000	-	100	14,00	15,00	443	928,5	130	900	C	A	70	A
385/65 R22.5	160K (158L)	9000 (8500)	N/A	110 (120)	11,75	12,25	378	1083	130	900	B	A	69	A
385/65 R22.5	164K (158L)	10000 (8500)	N/A	110 (120)	11,75	12,25	381,6	1082,3	130	900	B	A	69	A
385/55 R22.5	160K (158L)	10000 (8500)	N/A	110 (120)	12,25	11,75	386	996	130	900	C	A	70	A

## PATTERN PROPERTIES



Optimized tread design provides resistance against irregular wear by balancing the pressure equally under load.



Five circumferential ribs provide resistance against irregular wear.



Lateral sipes provide short braking distance.

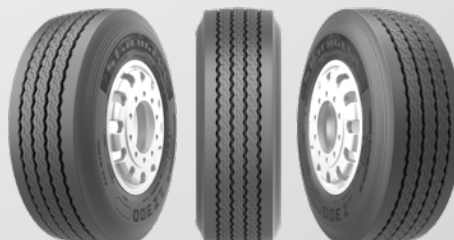
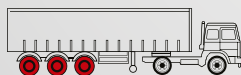


High-strength carcass with completely steel frame provides long life and retreadability.



Circumferential grooves drain water quickly and efficiently.

## POSITION / APPLICATION





# LZ 305

LZ 305 is a free rolling trailer tire. Special tread design provides exceptional grip on wet roads and ensures outstanding mileage performance.



TIRE SIZE	LOAD / SPEED INDEX	LOAD CAPACITY		SPEED LIMIT	RIM		INFLATED DIMENSIONS		INFLATED PRESSURE		EU TIRE LABEL			
		SINGLE	DUAL		RECOM.	PERMITTED	SECTION WIDTH	OUTER DIAMETER	psi	Kpa			DB	
215/75 R17.5	135/133J	4360	8240	100	6	6,75	212	772	123	850	D	B	69	A
235/75 R17.5	143/141J (144/144F)	5450 (5600)	10.300 (11.200)	100 (80)	6,75	7,50	239	800	127	875	C	B	70	A
385/65 R22.5	160K (158L)	9000 (8500)	N/A	110 (120)	11,75	12,25	372	1081	130	900	B	B	73	B
385/65 R22.5	164K*	10000	N/A	110	11,75	12,25	372	1081	130	900	B	B	73	B

\* For Trailer and Steer Axle Use

## PATTERN PROPERTIES



Five circumferential ribs provide resistance against irregular wear.



Blocked pattern structure provides superior handling on wet and snowy surfaces.



Lateral sipes ensure short braking distance.

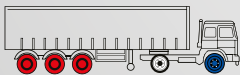


High-strength carcass with completely steel frame provides long life and retreadability.



Circumferential grooves drain water quickly and efficiently.

## POSITION / APPLICATION

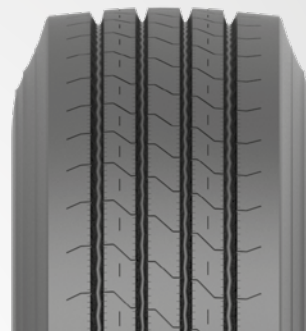


Blue: Optional



# GH 110

GH 110 is a free rolling trailer tire. Special tread pattern design ensures even wear throughout the tyre's lifespan. Multiple grooves allow fast water discharge and provide exceptional wet handling on asphalt roads. Wide tread area and multi dimensional sipes improve mileage and enhance traction. Offers outstanding grip on both wet and dry roads.



TIRE SIZE	LOAD / SPEED INDEX	LOAD CAPACITY		SPEED LIMIT	RIM		INFLATED DIMENSIONS		INFLATED PRESSURE		EU TIRE LABEL			
		SINGLE	DUAL		RECOM.	PERMITTED	SECTION WIDTH	OUTER DIAMETER	psi	Kpa			DB	
285/70 R19.5 FRT	150/148J	6700	12600	100	8,25	7.50, 9.00	283	894	130	900	D	B	69	A

FRT: Due to the high load capacity, can be used on Free Rolling Trailer axles.

## PATTERN PROPERTIES



Optimized tread pattern improves resistance against irregular abrasion by distributing pressure equally under load.



Computer designed tire pattern and five circumferential ribs ensure a balanced and comfortable drive.



Numerous sipes on the ribs enable exceptional grip.



Special tread compound and robust structure enhance efficiency of fuel consumption and improves longevity.



Circumferential grooves provide quick and efficient water discharge.



Exceptional carcass structure is suitable for retreading.

## POSITION / APPLICATION





# GC 700

GC 700 is an all position pattern for mixed service (On and Off road) use. Strong carcass structure delivers exceptional resistance to cutting and chipping. Wide footprint enhances handling and stability while improving mileage. Suitable for retreading multiple times.



TIRE SIZE	LOAD / SPEED INDEX	LOAD CAPACITY		SPEED LIMIT	RIM		INFLATED DIMENSIONS		INFLATED PRESSURE		EU TIRE LABEL			
		SINGLE	DUAL		RECOM.	PERMITTED	SECTION WIDTH	OUTER DIAMETER	psi	Kpa			DB	
12 R22.5	152/148L	7100	12600	120	9.00	8,25	302	1093	123	850	D	B	73	B
13 R22.5	156/150K	8000	13400	110	9,75	9	325	1135	127	875	D	B	73	B
315/80 R22.5	156/150K (154/150L)	8000 (7500)	13400 (13400)	110 (120)	9	9,75	312	1085	123	850	D	B	73	B

## PATTERN PROPERTIES



Special pattern design with blocks of different sizes reduces pattern noise.



Wide and closed shoulder structure increases lateral balance and enhances damage resistance.



Stone ejectors located among blocks minimize pebble penetration inside grooves.



Four circumferential grooves drain water, mud and snow quickly and efficiently, improving handling and increasing service life.



Special tread compound provides resistance to wears, cuts and breaks.



Offers superior handling and braking performance on roads and construction sites with zigzag block structure.

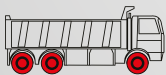


Excellent carcass structure is suitable for retreading multiple times.



Reinforced interconnected blocks provide a balanced and comfortable drive.

## POSITION / APPLICATION



# GC 710

GC 710 is developed to withstand the challenging conditions of construction sites and off-road use, while simultaneously providing perfect highway performance with extended mileage and improved fuel efficiency features.



TIRE SIZE	LOAD / SPEED INDEX	LOAD CAPACITY		SPEED LIMIT	RIM		INFLATED DIMENSIONS		INFLATED PRESSURE		EU TIRE LABEL			
		SINGLE	DUAL		RECOM.	PERMITTED	SECTION WIDTH	OUTER DIAMETER	psi	Kpa			DB	
12.00 R24 TL	160/157K	9000	16500	110	8,5	9,00	315,8	1218,8	131	900	D	C	70	A
12.00 R24 TT	160/157K	9000	16500	110	8,5	9,00	315,8	1218,8	131	900	D	A	71	B
315/80 R22.5	156/150L	8000	13400	120	9	9,75	312	1088	123	850	D	B	72	B

## PATTERN PROPERTIES



■ Strong circumferential ribs provide maximum resistance against cuts and chips.



■ Wide channels located on the shoulders improve traction on harsh working conditions including muddy surfaces.



■ Zigzag block structure ensures perfect grip and safe braking performance.



■ Stone ejectors located on groove bases avoid pebble penetration and saves the carcass.



■ Optimized tread profile evenly distributes weight on the footprint to guarantee long service life by avoiding irregular wear.



■ Special tread compound provides durability for off-road operations and offers comfort and low rolling resistance for highway use.



■ Three channels with wide angles enhance traction on challenging surfaces by effectively discharging water and mud.



■ Steel belted carcass is strong enough to be retreaded several times to multiply the tire's service life.

## POSITION / APPLICATION





# DC 700 Plus

DC 700 Plus is a drive axle tire suitable for mixed service. It is developed to provide high mileage, damage resistance and maximum traction on asphalt and on construction sites. It has a 3PMSF and M+S which means it is approved to use on snowy roads.



TIRE SIZE	LOAD / SPEED INDEX	LOAD CAPACITY		SPEED LIMIT	RIM		INFLATED DIMENSIONS		INFLATED PRESSURE		EU TIRE LABEL			
		SINGLE	DUAL		RECOM.	PERMITTED	SECTION WIDTH	OUTER DIAMETER	psi	Kpa			DB	
12 R22.5	152/148L	7100	12600	120	9.00	8,25	299,5	1091,8	125	860	E	B	75	B
295/80 R22.5	152/148M	7100	12600	130	9	8,25	298	1048	123	850	E	B	75	B
315/80 R22.5	156/150K (154/150L)	8000 (7500)	13400 (13400)	110 (120)	9	9,75	312	1085	123	850	E	B	75	B

## PATTERN PROPERTIES



■ Stone ejectors located deep of grooves decrease stone trapping.



■ The sipes between circumferential blocks increase traction on snowy and muddy roads, and provide short braking distance.



■ While reinforced interconnected blocks provide a comfortable drive on motorway it also increases block durability in construction site conditions.



■ Block array with different block sizes improves comfort by minimizing noise.



■ The directional, block-type tread pattern offers excellent grip and traction on wet, muddy and snowy surfaces in construction sites, while performing balanced performance on asphalt.



■ Optimized groove design enables excellent water/mud/snow discharge.

## POSITION / APPLICATION





# GY 800

Closed structure and pattern compound are specifically engineered for construction and mining site conditions to offer long life and ultimate wear and cut resistance. Provides excellent grip and handling on tough or muddy surfaces.



TIRE SIZE	LOAD / SPEED INDEX	LOAD CAPACITY		SPEED LIMIT	RIM		INFLATED DIMENSIONS		INFLATED PRESSURE		EU TIRE LABEL			
		SINGLE	DUAL		RECOM.	PERMITTED	SECTION WIDTH	OUTER DIAMETER	psi	Kpa			DB	
13 R22.5	156/150K	8000	13400	110	9,75	9,00	323	1135	127	875	D	B	72	B
295/80 R22.5	152/148L	7100	12600	120	9	8,25	297	1051	123	850	D	B	72	B
315/80 R22.5	156/150K	8000	13400	110	9	9,75	311	1085	125	850	D	B	72	B
12.00 R24 TL	160/157K	9000	16500	110	8,5	9,00	316,3	1219,1	131	900	D	B	72	B
12.00 R24 TT	160/157K	9000	16500	110	8,5	9,00	316,3	1219,1	131	900	D	A	71	B

Please contact your sales representative for GY 800 pattern without snowflake icon.

## PATTERN PROPERTIES



Optimized tread profile improves resistance against irregular wear by distributing pressure equally under heavy load.



Wide and closed shoulder structure improve lateral balance and damage resistance.



Stone ejectors among the blocks avoid pebble penetration inside groves.



Three circumferential grooves improve handling and traction by effectively discharging water, mud and snow.



Specially engineered tread compound and wide blocks provide resistance to wears and cuts.



Zigzag block structure offers outstanding handling and braking performance on roads and construction sites.



Strong and durable carcass is suitable for retreading multiple times to maximize service life.



Interconnected blocks provide a balanced drive on road, while increasing durability on site conditions.

## POSITION / APPLICATION







# LCW 710

LCW 710 is a free rolling trailer tire suitable for mixed service (On and Off road) applications. Special compound enhances longevity by providing exceptional resistance against wear and tears.



TIRE SIZE	LOAD / SPEED INDEX	LOAD CAPACITY		SPEED LIMIT	RIM		INFLATED DIMENSIONS		INFLATED PRESSURE		EU TIRE LABEL			
		SINGLE	DUAL		RECOM.	PERMITTED	SECTION WIDTH	OUTER DIAMETER	psi	Kpa			DB	
385/65 R22.5	160K (158L)	9000 (8500)	N/A	110 (120)	11,75	12,25	377	1077	130	900	D	B	74	B

## PATTERN PROPERTIES



Optimized tread pattern consisting of wide channels and big blocks provides superior handling and longevity on wet or muddy surfaces.



Unique tread design improves resistance against irregular wear by distributing pressure equally under load.



Reinforced interconnected blocks provide a balanced and comfortable drive while enhancing resistance towards tough site conditions.



Special tread compound provides resistance to wears, cuts and breaks.

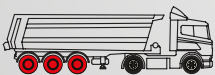


Optimized grooves drain water, mud and snow quickly and effectively.



Strong carcass structure is suitable for retreading multiple times.

## POSITION / APPLICATION



# DM 905

DM 905 is an all position pattern that is suitable for off operating service. Robust tread blocks provide exceptional resistance to tears and offer outstanding traction in tough road conditions. Offers excellent self-cleaning feature thanks to its special lug design.



**P.O.R.**



TIRE SIZE	LOAD / SPEED INDEX	LOAD CAPACITY		SPEED LIMIT	RIM		INFLATED DIMENSIONS				PR EQUIVALENT	CONSTRUCTION	INFLATED PRESSURE	
		SINGLE	DUAL		RECOM.	PERMITTED	SECTION WIDTH	OUTER DIAMETER	DYNAMIC ROLLING CIRCUMFERENCE	STATIC LOADED RADIUS			psi	Kpa
13 R22.5	154/150K	7500	13400	110	9,75	9	320	1135	3428,2	520,6	18	TL	123	850

## PATTERN PROPERTIES



Reinforced block arrays provide steady driving performance at off road conditions.



Interconnected reinforced blocks enhance driving balance and offer resistance to chunks.



Open angled grooves drain mud quickly and eject stones effectively.



Provides high mileage along with steady off the road driving through optimized tread profile, full/empty rate and tread depth.

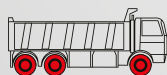


Exclusive compound provides endurance against wear-out, cuts, splits and laceration.



Durable carcass structure allows retreading.

## POSITION / APPLICATION





# STARMAXX TRUCK & BUS TIRES DESIGNED FOR LONG LIFE AND FUEL EFFICIENCY



GH110

[starmaxx.com](http://starmaxx.com)

 **starmaxx**  
TRUCK-BUS TIRES

# GU 500

GU 500 is an all season bus tire that is suitable for all positions. Robust compound provides exceptional service for inner-city narrow streets and curbs with stop-and-go traffic. Delivers exceptional mileage performance. Offers high retreadability feature thanks to its strong carcass structure.



TIRE SIZE	LOAD / SPEED INDEX	LOAD CAPACITY		SPEED LIMIT	RIM		INFLATED DIMENSIONS		INFLATED PRESSURE		EU TIRE LABEL			
		SINGLE	DUAL		RECOM.	PERMITTED	SECTION WIDTH	OUTER DIAMETER	psi	Kpa			DB	
275/70 R22.5	150/145J (152/148E)	6700 (7100)	11600 (12600)	100 (75)	8,25	7,5	281,7	967,3	130	900	D	B	73	B
275/70 R22.5	150/148J	6700	12600	100	8,25	7,5	281,7	967,3	130	900	D	B	73	B

## PATTERN PROPERTIES



Specially developed tread composition and four wide circumferential ribs separated with sipes provide ultimate performance and longevity in inner-city usage.



Z-shaped channels and thin sipes provide safety and traction on wet surfaces.



Circumferential grooves drain water quickly and efficiently.



Optimized tread width and tread depth ensures longevity and resistance to abrasion.



Different size block array reduces tread noise level.



Friction indicators located on sidewalls enable controlling the levels of abrasion.



Reinforced sidewalls provide resistance against the impacts of friction to pavement while approaching bus stops.



Special tread composition offers high traction and safety under low temperatures.

## POSITION / APPLICATION







# GUW 550

GUW 550 is suitable to be used as all position tire on innercity vehicles. Robust compound provides exceptional service for innercity narrow streets and stop-and-go traffic. Offers high retreadability thanks to its strong carcass structure. 3PMSF and M+S markings on the tire ensure better grip and braking on snow. Wide tread design enhances mileage of the tire.



TIRE SIZE	LOAD / SPEED INDEX (152/148E)	LOAD CAPACITY		SPEED LIMIT	RIM		INFLATED DIMENSIONS		INFLATED PRESSURE		EU TIRE LABEL			
		SINGLE (7100)	DUAL (12600)		RECOM.	PERMITTED	SECTION WIDTH 282,5	OUTER DIAMETER 968,3	psi 130	Kpa 900			DB 73	
275/70 R22.5	150/145J (152/148E)	6700 (7100)	11600 (12600)	100 (75)	8,25	7,5	282,5	968,3	130	900	D	B	73	B

## PATTERN PROPERTIES



Five circumferential ribs provide safety, balanced driving and lateral resistance.



Z-shaped capillary sipes offer ultimate traction on snowy roads and improves safety by reducing brake distance.



Ensures effective water, mud and snow discharge thanks to four circumferential grooves.



Optimized block array reduces tread noise level.



Specially formulated tread composition and deep blocks provide ultimate performance and longevity by increasing resistance against abrasion caused by frequent stops.



Friction indicators located on sidewalls enable controlling the levels of abrasion.



Reinforced sidewalls provide resistance against the impacts of friction to pavement while approaching bus stops.

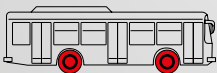


Special tread composition offers high traction and safety under low temperatures.



Optimized tread width and tread depth enhance longevity by improving resistance against abrasion.

## POSITION / APPLICATION





# DUW 550

DUW 550 is designed for innercity vehicles especially as drive axle of buses. 3PMSF and M+S markings on the tire prove better grip and braking on snow. Wide tread design enhances mileage performance of the tire.



TIRE SIZE	LOAD / SPEED INDEX (152/148E)	LOAD CAPACITY		SPEED LIMIT (75)	RIM		INFLATED DIMENSIONS		INFLATED PRESSURE		EU TIRE LABEL			
		SINGLE (7100)	DUAL (12600)		RECOM.	PERMITTED	SECTION WIDTH	OUTER DIAMETER	psi	Kpa			DB	
275/70 R22.5	150/145J (152/148E)	6700 (7100)	11600 (12600)	100 (75)	8,25	7,5	282,5	968,9	130	900	E	B	74	B

## PATTERN PROPERTIES



Specially developed tread composition and four wide circumferential ribs separated with sipes provide ultimate performance and longevity in inner-city usage.



Z-shaped channels and thin sipes provide safety and traction on wet surfaces.



Optimized tread width and tread depth enhance longevity by improving resistance against abrasion.



Unique tread composition offers high traction and safety under low temperatures.



Five circumferential ribs provide safety, balanced driving and lateral resistance.



Friction indicators located on sidewalls enable controlling the levels of abrasion.



Reinforced sidewalls provide resistance against the impacts of friction to pavement while approaching bus stops.



Reinforced interconnected blocks offer ultimate inner city performance.

## POSITION / APPLICATION





# DU 500

It is a drive axle city bus tire developed for use at low temperatures, on dry, wet and snowy surfaces. It can also be used on the front axle depending on the weather and road conditions.



TIRE SIZE	LOAD / SPEED INDEX	LOAD CAPACITY		SPEED LIMIT	RIM		INFLATED DIMENSIONS		INFLATED PRESSURE		EU TIRE LABEL			
		SINGLE	DUAL		RECOM.	PERMITTED	SECTION WIDTH	OUTER DIAMETER	psi	Kpa			DB	
275/70 R22.5	150/145J (152/148 E)	6700 (7100)	11600 (12600)	100	8,25	7,5	283,5	935,2	130	900	D	C	74	B

## PATTERN PROPERTIES



The specially developed tread compound provides the traction needed in winter conditions, on snowy and wet surfaces, with four wide circumferential ribs divided by a wide groove and then lamellas. It offers short braking distance.

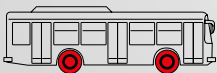


Thin lamellas placed on the pattern with zigzag channels serve as holding elements. Provides traction and safety on snowy and wet surfaces.



It provides effective water/mud/snow discharge with three circumferential grooves. It minimizes the settling of stones in the channels with the stone pushers at the bottom of the grooves.

## POSITION / APPLICATION







Starmaxx Truck and Bus Tires are characterized by quality workmanship, leading edge technology, unique tread designs and excellent performance offering perfect mix of quality and value.

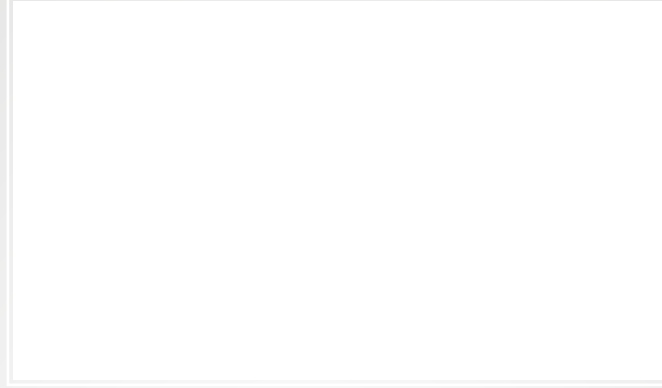
Our success depends on exceeding the expectations of our customers and standing behind everything we do.

Our aim is to build long term relationships with our customers by providing excellent service, quality and delivering our promises.



2024 EDITION

DISTRIBUTED BY



### Headquarters - Factory

Petlas Tire Industry and Trade Kindam Mahallesi Ankara - Kayseri Caddesi No: 2/1 Kırşehir / TÜRKİYE T: +90 386 252 65 50 • F: +90 386 252 65 70

### Int. Sales & Marketing

Petlas Tire Industry and Trade Ako Kule, Söğütözü Mh. 2178. Cad. No: 6 06530 Ankara / TÜRKİYE T: +90 312 309 30 30 • F: +90 312 309 22 66

### Petlas Tire USA

1111 E. Lincolnway STE 205 Cheyenne, WY 82001 USA

[www.starmaxx.com](http://www.starmaxx.com) **MADE IN TÜRKİYE**

 **starmaxx**  
TRUCK & BUS TIRES